

# Form Processing that Works™

FormStorm™ Enterprise makes robust form and invoice processing easy, and - most importantly - *affordable*



## Form Processing Made Easy

Extracting data from documents is considered by many a difficult task. We think otherwise, and believe the solution should, and can, be easy. Enter FormStorm™ Enterprise, A rich user friendly automated data entry software.

FormStorm is robust, function-rich, yet easy to implement and use, and is aggressively priced. It is ideally suited to a variety of both departmental and enterprise processing needs. SemiForm™ and AutoForm technologies allow to process semi-structured forms such as invoices, purchase orders and similar, along with ordinary forms.

Whether your forms are static or they vary, FormStorm allows you to set them up quickly using ready-made applications with pre-defined field attributes, to speed up implementation and reduce start-up and other costs.

## Flexible System Architecture

FormStorm Enterprise is flexible and can be installed on one computer for low to medium volume departmental applications, or large, networked, multi-station system to address higher volumes.

## Everything You Need, Nothing You Don't

With FormStorm, you have every- thing you need to solve almost any form processing challenge.

Whether it's your conference registration, financial application, loan, security and warranty registration forms, or incoming invoices, FormStorm Enterprise can be quickly applied to address your data entry business problem accurately and economically. FormStorm even has its own built-in API. Resellers or users may apply it to create custom functions (validation, routing, custom function keys), or integrate FormStorm into other applications and use it as a 'black box' server. These capabilities provide you complete freedom to customize FormStorm to your needs.

## Surprising Affordability, Not Compromised Performance

For what FormStorm Enterprise offers, you'd expect it to cost quite a bit to purchase, operate, and maintain. Well, we are "sorry" to disappoint you. FormStorm is priced right to fit comfortably in departmental budgets. And, its intuitive design supported by extensive on-line help, reduces training needs and costs. We even provide assistance in setting up your application, and optimizing your solution!

Contact us today to enjoy the functionality you need, without the extra costs you don't.

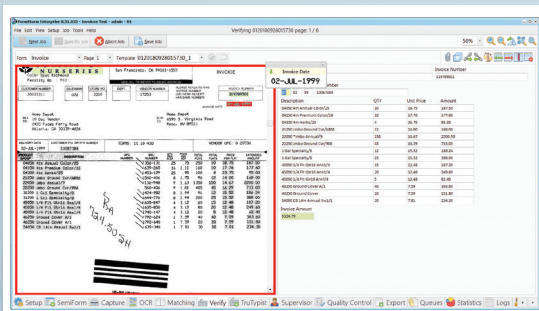
## Technology Rich for Any Application

FormStorm Enterprise incorporates sophisticated page layout analysis, and multiple recognition engines, all working in harmony to deliver the best possible results for a wide range of forms and applications.

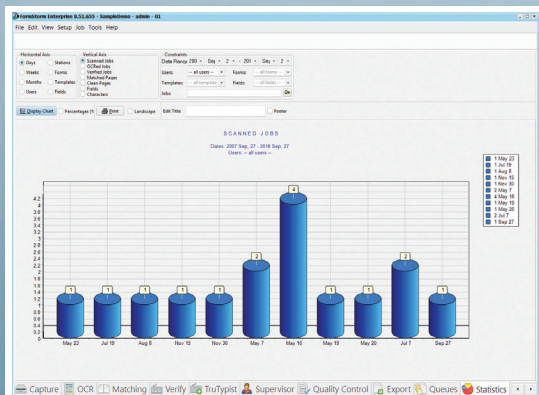
CharacTell



# FormStorm Enterprise Technical Specifications



SemiForm supports processing unstructured documents (invoices, purchase orders) just as easy as standard forms.



System administrators can generate detailed performance statistics to help manage for optimal productivity.

## CharacTell Ltd.

www.charactell.com

sales@charactell.com

US: Phone 617-965-1014

Fax 617-965-0010

Israel: Phone +972-3-6495794

Fax +972-3-6495797

CharacTell™, FormStorm™, SemiForm™, CheckStorm™, ViewStorm™, ReViewStorm™, FormProcessing That Works™, Form Processing AT Work™, the CharacTell logo, the FormStorm logo, and the SemiForm logo, are trademarks of CharacTell Ltd. Other trademarks may be owned by their respective intellectual property owners.



CharacTell

## SYSTEM CHARACTERISTICS

Architecture	Stand-alone, or scalable, networked system
Modules	Application & form set-up, capture, OCR processing, data verification, system & user management, operation and performance monitoring
Station Expansion	Capture, OCR, and Data Verification stations on the same network
Optional Modules and Functions	<b>SemiForm</b> for processing of semistructured forms (invoices, tables,...) <b>CheckStorm</b> for processing of US personal and business checks <b>ViewStorm</b> for integrated form indexing, storage, and retrieval <b>ReViewStorm</b> for post data entry routing, review, and adjudication
GUI Language	English (tutorials and on-line, context sensitive help); translation tools
System & User Management	Unlimited number of users; user-dependent privilege assignment Performance management and detailed report generation capability Monitoring of system events, queues, and logs
Programmable API	Supports system customization: validation rules, assigned function System keys, events, modified GUI, and use as a "black box" server

## APPLICATION CHARACTERISTICS

Recognition Types	<b>FormStorm:</b> OCR/ICR/OMR/Bar Code/Patch Code <b>CheckStorm:</b> MICR, E13B; US/Canada CAR/LAR (optional)
Recognition Technology	Multiple recognition engines vote separately for machine printed and handwritten characters; integrated use of dictionaries
Page Processing	Automated template creation, pre-set templates
OCR Languages	over 100 languages
Custom Classifiers	User-created custom classifiers based on form region content
Bar Code Types (1D and 2D)	Code 11, Code 39, Code 93, Code 128, Codabar, Interleaved 2 of 5, EAN 13, EAN 8, Telepen, UPC A, UPC E, EAN and UPC (20 total) PDF417, QR, DataMatrix (3 2-dimensional formats)
Patch Codes Types	1, 2, 3, 4, 6 and T
Image Enhancement	Global, and per region: Deskew, rotation, despeckle, line & shade removal, local adjustment, border removal & fill, broken character repair
Form ID	Advanced ID technology supports virtually unlimited number of forms
Label Printing	Item and job/batch labels may be printed; Label printer required
Concurrency	Multiple systems support different applications, projects, and customers

## DATA CHARACTERISTICS

Image Inputs	Automated disk scanning, direct scanner support
Image Formats	TIFF Uncompressed, Group 3 & 4, BMP, JPEG, PDF, grayscale
Scanner Input	Direct scanning from any TWAIN compatible scanner Automated Document Feeding and duplex scanning are supported
Resolution	<b>Recommended:</b> 300 DPI; Supported: 150 DPI to 300 DPI
Image Size	Up to legal size in portrait or landscape (or 8,000 x 8,000 pixels)
Data Export Formats	<b>Standard:</b> Access®, SQL Server® and Express, Oracle®, XML, CSV <b>Custom:</b> databases supporting custom connection string integration
Image Export Formats	TIFF, PDF, Searchable PDF, Color

## SYSTEM REQUIREMENTS

Operating System	XP (SP3)/Windows 7/8/10 / Windows Server 2008/12/16
CPU properties	speed: 2 GHz or higher; OCR – recommended dual core or higher
Memory	OCR: 2Gb RAM or larger; Other stations: 1Gb RAM or larger
Disk Space	500Mb of available disk space or more per station (1Gb for server)
Scanner	TWAIN compatible scanner (required for direct operation)